

2020



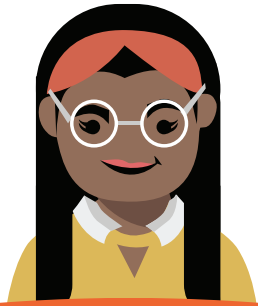
Pipeline



Latinx
Education
Collaborative

BELOW THE FOLD

NAME: _____



DEFINE

LESSON FOUR

Define

Take your observations from the Empathy Stage and revisit the design challenge you picked in Lesson 2. Does it still describe the problem you want to solve? Or do you need to adjust it to fit the new information you gathered with Empathy? Remember, it's about the "why," not the "how." Your challenge question should be open ended and guide you toward many different solutions.



Inspiration and Research

Now that we've learned about our design challenge, it's time to learn more about how your challenge shows up outside of your school. Can you imagine a scenario somewhere else in the world where someone might face a similar problem? Or, do products already exist that solve problems like the challenge you're facing?

Use the Internet, books or newspapers to learn more about how your challenge shows up in the rest of the world.

Which existing solutions might work? Do any solutions inspire you to try something new? What facts can you find that prove your problem is important?

Document your research here:



LESSON FOUR (CONTINUED)

Ideate

Generate many possible ideas to solve the problem. Remember, go for bold, creative ideas. No idea is too wild right now.





QUESTION OF THE DAY

What kind of teacher would I want to be? How would I make sure my classroom met the needs and desires of kids from different backgrounds?



**Latinx
Education
Collaborative**



The LEC is a 501 (c) 3 nonprofit organization dedicated to increasing and retaining the number of quality Latinx education professionals in K-12.

The LEC works on creating and implementing culturally responsive recruitment and retention strategies designed to attract, support, enhance, and retain Latinx education professionals.



@LATINXEDCO

**www.latinxedco.org
edgar@latinxedco.org
305.906.0644**